



**CITY OF SIMI VALLEY**  
*Home of The Ronald Reagan Presidential Library*

January 16, 2026

**SUBJECT: FY 2025-26 ANNUAL MINOR STREETS REHABILITATION PROGRAM  
PHASE I (CONCRETE), SB1, CP6000023, SPECIFICATION NO. SV  
26-04  
ADDENDUM NO. 1**

All Prospective Bidders:

NOTICE IS HEREBY GIVEN to all prospective Bidders that the following modifications are made to the subject project plans and specifications:

- **Replace Page 99 through Page 103 of project specifications with attached Page 99 (Revised) through Page 103 (Revised).**
- **See attached "CURB RAMP INSPECTION FORM".**

Acknowledgment of this addendum by inserting the addendum number on page 16 of the proposal and returning the subject Addendum No. 1 with the proposal to the City is required. Failure to do so may result in the disqualification of your bid. Questions regarding this addendum may be directed to Ashique Khandaker, Senior Engineer, at (805) 583-6791.

Sincerely,

Ashique Khandaker  
Senior Engineer/Capital Projects

**RECEIPT OF THIS NOTICE IS HEREBY ACKNOWLEDGED**

\_\_\_\_\_  
Name (Print)

\_\_\_\_\_  
Signature

\_\_\_\_\_  
Title

## SECTION 5040

### **PORTLAND CEMENT CONCRETE IMPROVEMENTS**

#### 5040-1 **GENERAL**

- A. The work described in this section consists of furnishing all labor, materials, tools, equipment and incidentals necessary for the removal, reconstruction and construction of Portland Cement Concrete improvements, including installation of truncated dome detectable warning surfaces, clearing and grubbing, grading, earthwork, excavation, fill, backfill, compaction, saw-cutting of concrete and asphalt concrete, epoxy when applicable, asphalt concrete replacement, asphalt concrete ramp removal, installation and replacement of drain pipe, protection and restoration of existing public and private utilities, relocation of mailboxes, control of surface and subsurface water and groundwater, dewatering, water testing concrete for grade, removal and disposal of concrete and asphalt concrete and extraneous and surplus excavated materials, preservation and restoration of existing landscape planting and irrigation system within and outside of the public right-of-way, restoration of all areas and items adjacent to the work site on public and private properties which were disrupted during the above removals and construction, necessary surveying for meeting ADA requirements and positive drainage, repainting the street curb and/or address numbers on the curb face, and all other features and work as necessary to complete this work as shown on the Plans and the standard plates/details of the Appendices of these Special Provisions, as specified in the SSPWC and these Special Provisions, and as directed by the Engineer.
- B. Removal of Portland Cement Concrete curb, walk, gutters, cross gutters, curb ramps, driveway, and alley intersections must be performed as shown on the plans, these special provisions, the Appendices of these special provisions, and in accordance with SSPWC Subsection 401-3.2, "Concrete Curbs, Walks, Gutters, Cross Gutters, Curb Ramps, Driveway, and Alley Intersections," except as modified herein.
- C. Construction and reconstruction of Portland Cement Concrete curb, walk, gutters, cross gutters, curb ramps, driveway, and alley intersections must be performed as shown on the plans, these special provisions, the Appendices of these special provisions, and in accordance with SSPWC Subsection 201-1, "Portland Cement Concrete," and 303-5 "Concrete Curbs, Walks, Gutters, Cross-Gutters, Alley Intersections, Access Ramps, and Driveways," except as modified herein.

#### 5040-2 **CONSTRUCTION MATERIALS**

- A. Portland cement concrete must be 520-C-2500 per SSPWC Subsection 201-

1.3.3, "Concrete Specified by Class and Alternate Class." All concrete must be protected until 90% of design strength is achieved.

- B. Portland cement concrete for driveway approaches must use Type III Portland cement in accordance with SSPWC Subsection 201-1.2.4.1b, "Portland Cement".
- C. Unless otherwise approved by the engineer, grading and backfill must be completed using native soil with biomaterial removed or Class II aggregate base. Costs must be included in applicable bid items for removal and reconstruction.
- D. Truncated dome detectable warning surfaces must be yellow in color.
- E. Pipe for curb drains must be Schedule 40 PVC pipe.

#### 5040-3 REMOVAL AND RECONSTRUCTION

- A. All Portland Cement Concrete curb, walk, gutters, cross gutters, curb ramps, and driveway approaches required to be removed in connection with performing the work under this Section must be saw cut, unless joining at a construction joint or expansion joint, and must be constructed/reconstructed in kind or better in accordance with the applicable provisions of the SSPWC and subject to approval by the Engineer.
- B. A maximum of five (5) working days will be allowed between removal and reconstruction of any concrete work.
- C. At the direction of the Engineer, the Contractor must backfill any areas of concrete removal to maintain a safe path of travel for pedestrians. No removal areas must be left exposed or in an unsafe condition over weekends and during holidays unless otherwise directed by the Engineer.
- D. After removal and prior to end of the workday, the Contractor must backfill or ramp any areas of concrete removal adjacent to school facilities and at school crossings to maintain a safe path of travel for pedestrians.
- E. Where, at the direction of the Engineer, the removal, construction and/or reconstruction of concrete improvements adjacent to asphalt concrete pavement requires the removal of existing asphalt concrete pavement, the Contractor must sawcut the asphalt pavement to clean lines at full depth to a minimum length of twelve (12) inches from the edge of the concrete improvement. The Contractor must remove the asphalt pavement within the limits designated by the Engineer and in accordance with SSPWC Subsection 401-2, "Asphalt Concrete Pavement."
- F. All damage to the existing asphalt concrete that is to remain in place must be

repaired to a condition equal to that of the existing prior to beginning the removal operations. The cost of repairing the existing asphalt concrete damaged by the Contractor's operations must be at the Contractor's expense.

- G. All materials to be removed must be disposed of at a landfill site at the Contractor's expense. Special reference is made to SSPWC Section 400, "Protection and Restoration," except as modified herein.
- H. All areas adjacent to the work site disrupted during the reconstruction of concrete curb, walk, gutters, cross gutters, curb ramps, driveway, and alley intersections must be restored to its original condition within five (5) working days, including but not limited to, restoration of landscape planting and irrigation system improvements, utilities, planters, walls, fences, mailboxes, street address numbers on curb faces, and other such decorative items and work, which may be encountered and disturbed during the course of the contract. Any relocation must be at the Contractor's expense.
- I. The Contractor must remove and dispose of all existing asphalt concrete ramps immediately adjacent to Portland Cement Concrete improvements that are to be removed and reconstructed.

#### 5040-4 CURB RAMPS

- A. Concrete curb ramps must be constructed as depicted on plans and in accordance with the most recent revision of Caltrans Standard Plans A88A and A88B.
- B. Unless otherwise directed by the Engineer and regardless of whether the new ramp would conform to the slope requirements, the Contractor must construct the ramp within the area between the beginning and end of the curb return.
- C. All concrete work completed between the beginning and end of the curb return is considered part of the curb ramp measurement and payment.
- D. Adjustment of pull boxes impacted by curb ramp construction must be included in the bid item for curb ramp removal and reconstruction.
- E. Post construction, the contractor must submit the City's curb ramp inspection from for all newly constructed curb ramps for review by Engineer.

#### 5040-5 TRUNCATED DOMES

- A. Truncated dome detectable warning surfaces must be cast-in-place and installed in accordance with the most recent revision of Caltrans Standard Plans A88A and A88B.
- B. Cast-in-place truncated dome detectable warning surfaces must be installed by

sawcutting and removing the area in which the domes will be placed, and wet setting the truncated dome panel in new concrete.

5040-6 CONCRETE GRINDING

- A. Sidewalk joints and cracks with vertical offsets between 3/8 inch and 1-1/2 inches must be ground. The maximum taper of ground areas must conform to the Americans with Disabilities Act (ADA) requirements and not exceed 8.33% in the direction of travel. The minimum width of grind must be 6". Grinding work must include defects running perpendicular to the direction of pedestrian travel; parallel to the direction of travel (primarily at driveways); and those areas at the sidewalk return where the sidewalk is raised above the curb. At locations where the sidewalk is sunken in relation to the top of the curb, between 3/8 inch and 3/4 inch, the top of the curb must be ground. Where the sidewalk is raised 3/8 inch to 1-1/2 inches in relation to the curb return, the sidewalk must be ground.
- B. The City will mark limits of grinding work in advance of the actual repairs.
- C. Offsets must be ground to produce a smooth non-skid surface closely resembling the appearance of the adjacent concrete. The finish must approximate a transverse broomed surface texture. The ground taper must have a "squared off" geometric with straight borders. Sharp edges left by the grinding operations must be smoothed. Grinding must be performed so that the sidewalk surface has essentially the same or slightly rougher texture adjacent to either side of the joint or crack. Ground surfaces must not be smooth. Grinding must be performed so that the finish grind has a rectangular appearance consisting of straight back line with no stray grinding marks. The adjacent concrete must remain untouched by the grinding process without scar or damage.

5040-7 GUTTER WATER TESTING

- A. All concrete curb and gutter and cross gutter with less than two percent (2%) longitudinal slope must be water tested after placement of concrete, but before the concrete has fully set, for compliance with the proposed project plan grades and positive drainage. The cost of replacement and/or reworking of the concrete curb and gutter and cross gutter must be at the Contractor's expense.

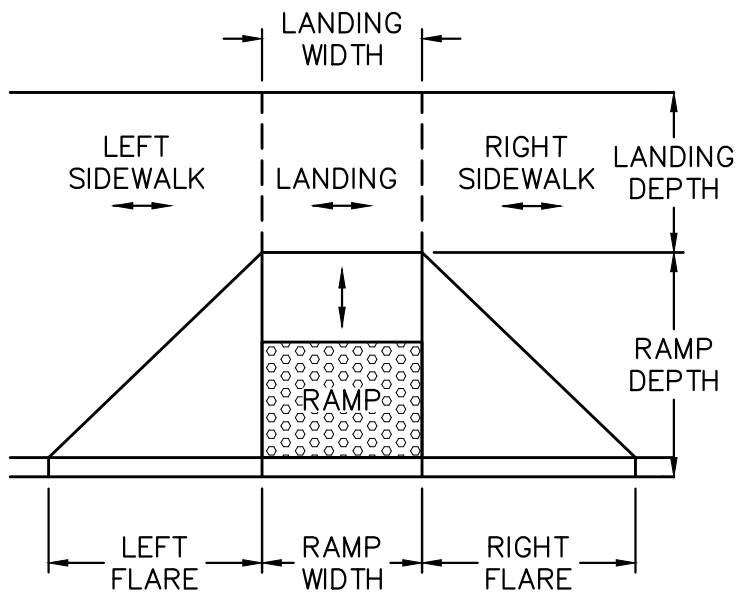
5040-8 NOTICE TO AREA PROPERTY OWNERS/BUSINESS AND OWNERS/ RESIDENTS

- A. Notification to affected residents, property owners, and businesses is required and must be the full responsibility of the Contractor. Affected places of business must be notified in writing, forty-eight hours (two full working days) prior to restricting street parking or access to work areas. This minimum time limit is in addition to weekends and holidays. Full compensation for this

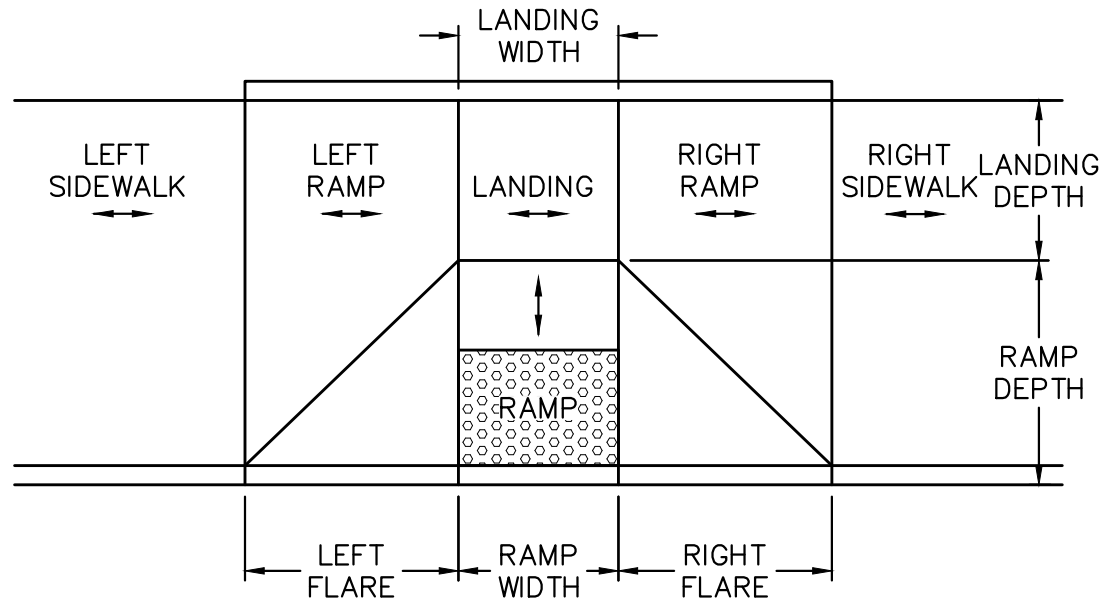
notification is considered to be included in the bid prices of other applicable items of work.

5040-9 MEASUREMENT AND PAYMENT

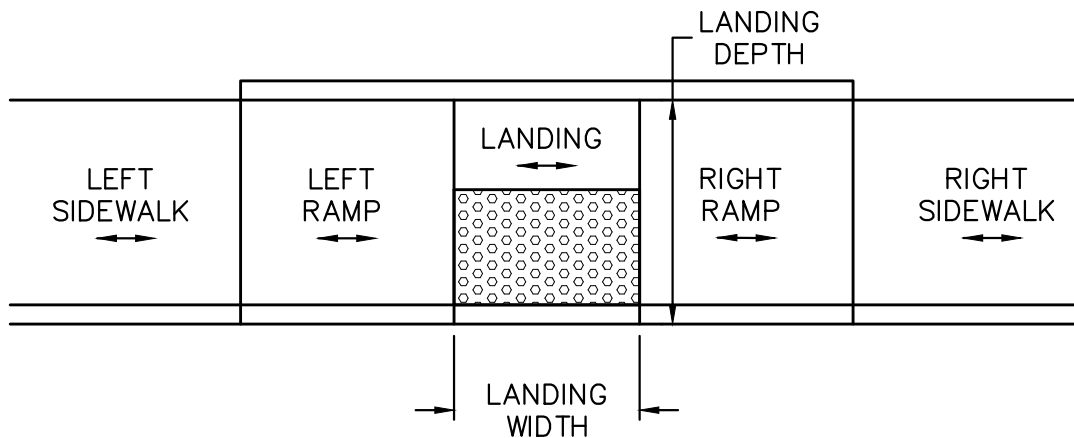
- A. Measurement and payment for sawcut and removal, construction and reconstruction of Portland Cement Concrete curb and gutter, sidewalk, curb ramps, driveways, truncated dome detectable warning surface installation on existing curb ramps, curb drain installation, and all other work necessary to match the existing improvements will be made at the Contract unit price bid per each, per linear foot, or per square foot as shown in the Bid Schedule.
- B. The Contract price and payment is full compensation for furnishing all labor, materials, tools, equipment, transportation and incidentals, and for doing all the work involved and necessary for the sawcutting, removal, reconstruction and construction of Portland Cement Concrete curb, walk, gutters, cross gutters, curb ramps, driveways, and alley intersections, as shown on the Plans and the standard plates/details of the Appendices of these Special Provisions, as specified in the SSPWC and these Special Provisions, and as directed by the Engineer.



CASE A



CASE B



CASE C

SLOPE CONVENTION:

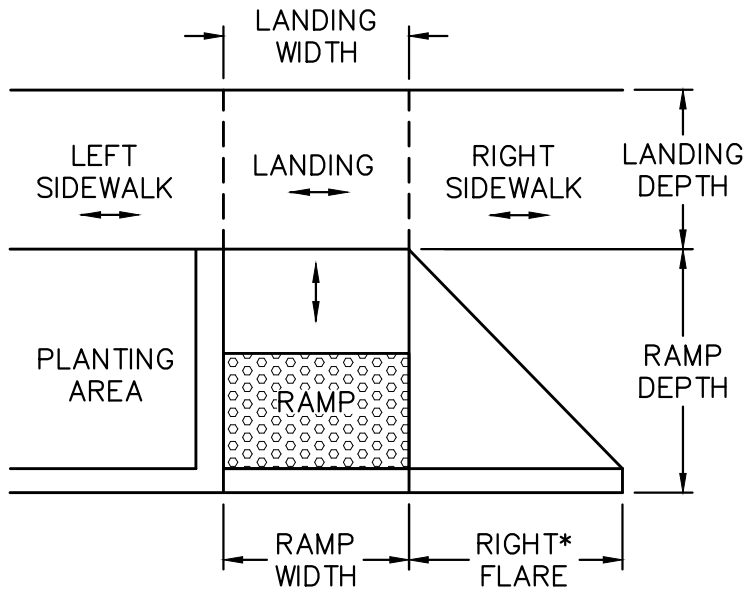
RUNNING SLOPE – PARALLEL TO  
PATH OF TRAVEL

CROSS SLOPE – PERPENDICULAR TO  
PATH OF TRAVEL

ARROWS INDICATE PATH OF TRAVEL.

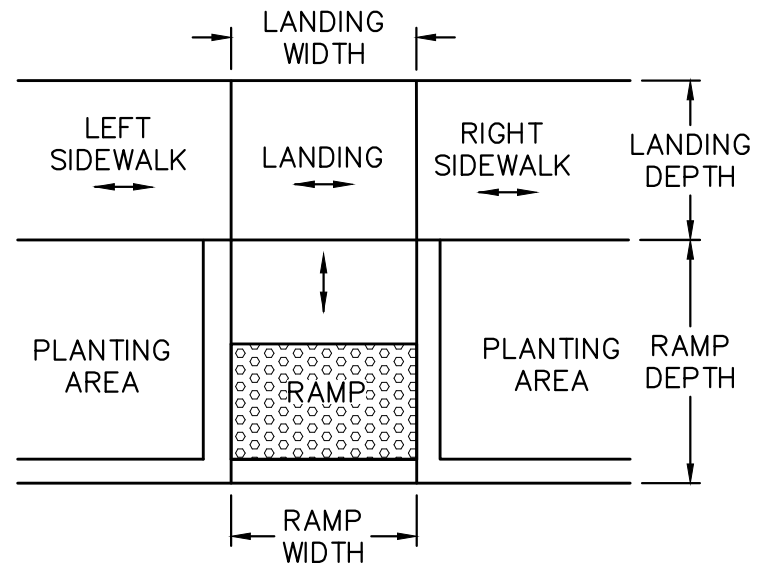
CURB RAMP TERMINOLOGY

SHEET 1

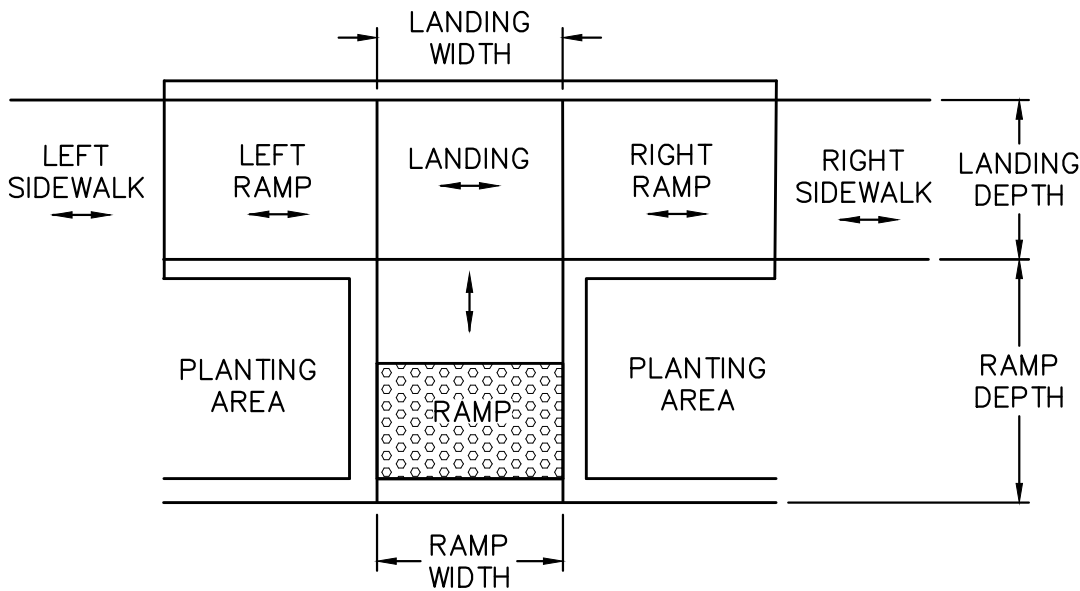


CASE G

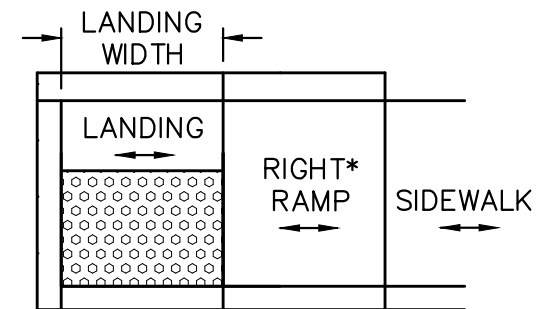
\*THIS CASE CAN BE DESIGNED WITH A LEFT OR RIGHT FLARE



CASE F



CASE C/F COMBINE



CASE CH

\*THIS CASE CAN BE DESIGNED WITH A LEFT OR RIGHT RAMP

CURB RAMP TERMINOLOGY



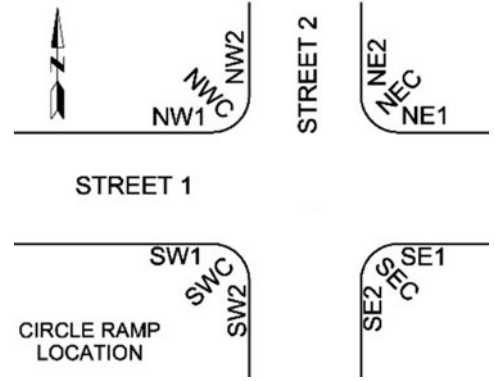
CITY OF SIMI VALLEY  
**CURB RAMP INSPECTION FORM – CASE A**

Ramp No.: \_\_\_\_\_

Project/Permit No.: \_\_\_\_\_

Street 1: \_\_\_\_\_

Street 2: \_\_\_\_\_



**LANDING**

Width: \_\_\_\_\_ ft

Depth: \_\_\_\_\_ ft

Running Slope: \_\_\_\_\_ %

Cross Slope: \_\_\_\_\_ %

**SIDEWALK**

(Within EC/BC)

Running Slope: \_\_\_\_\_ %

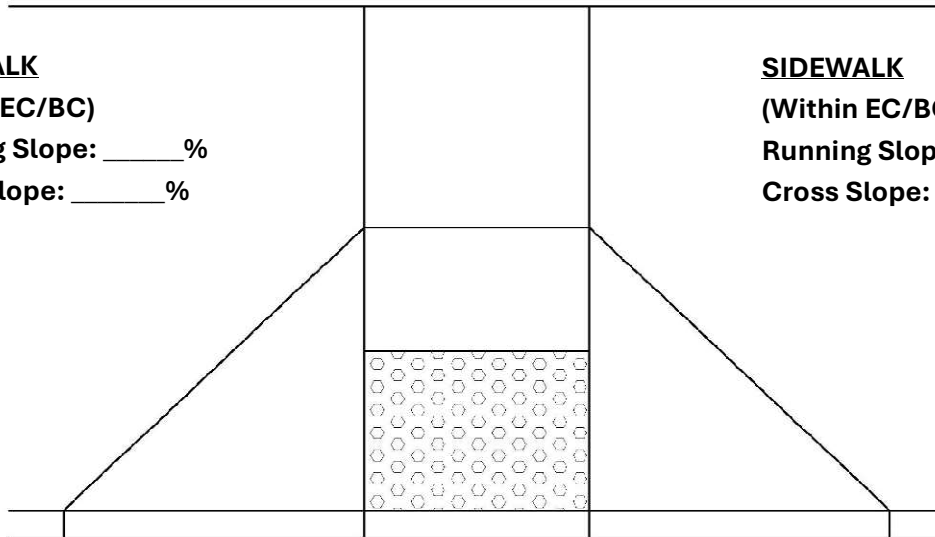
Cross Slope: \_\_\_\_\_ %

**SIDEWALK**

(Within EC/BC)

Running Slope: \_\_\_\_\_ %

Cross Slope: \_\_\_\_\_ %



**LEFT FLARE**

Slope at Curb: \_\_\_\_\_ %

**CENTER RAMP**

Ramp Max. Run Length: \_\_\_\_\_ ft

Ramp Width: \_\_\_\_\_ ft

Ramp Running Slope: \_\_\_\_\_ %

Ramp Cross Slope: \_\_\_\_\_ %

Ramp Lip Flush:  Y  N

Detectable Warning:  Y  N

**RIGHT FLARE**

Slope at Curb: \_\_\_\_\_ %

Overall Meet Standard:  Y  N (If no, provide justification.)

Additional Sheets Attached:  Y  N

Contractor Inspected By: \_\_\_\_\_

Print Name

Signature

Date

City Reviewed By: \_\_\_\_\_

Print Name

Signature

Date





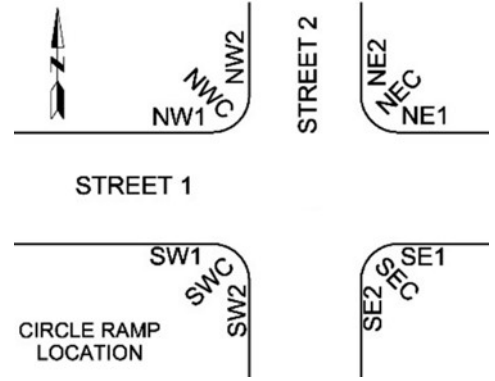
CITY OF SIMI VALLEY  
**CURB RAMP INSPECTION FORM – CASE C**

Ramp No.: \_\_\_\_\_

Project/Permit No.: \_\_\_\_\_

Street 1: \_\_\_\_\_

Street 2: \_\_\_\_\_



**LEFT RAMP**

Width: \_\_\_\_\_ ft  
 Cross Slope: \_\_\_\_\_ %  
 Running Slope: \_\_\_\_\_ %

**RIGHT RAMP**

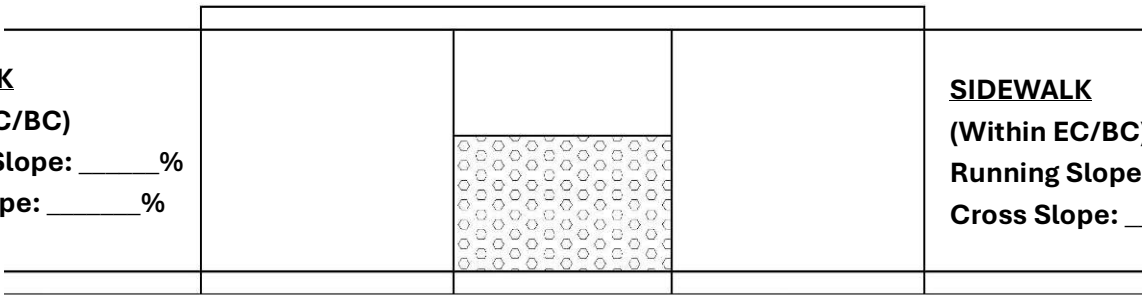
Width: \_\_\_\_\_ ft  
 Cross Slope: \_\_\_\_\_ %  
 Running Slope: \_\_\_\_\_ %

**SIDEWALK**

(Within EC/BC)  
 Running Slope: \_\_\_\_\_ %  
 Cross Slope: \_\_\_\_\_ %

**SIDEWALK**

(Within EC/BC)  
 Running Slope: \_\_\_\_\_ %  
 Cross Slope: \_\_\_\_\_ %



**LANDING**

Width: \_\_\_\_\_ ft  
 Depth: \_\_\_\_\_ ft  
 Running Slope: \_\_\_\_\_ %  
 Cross Slope: \_\_\_\_\_ %  
 Ramp Lip Flush:  Y  N  
 Detectable Warning:  Y  N

Overall Meet Standard:  Y  N (If no, provide justification.)

Additional Sheets Attached:  Y  N

Contractor Inspected By: \_\_\_\_\_

Print Name

Signature

Date

City Inspected By: \_\_\_\_\_

Print Name

Signature

Date



