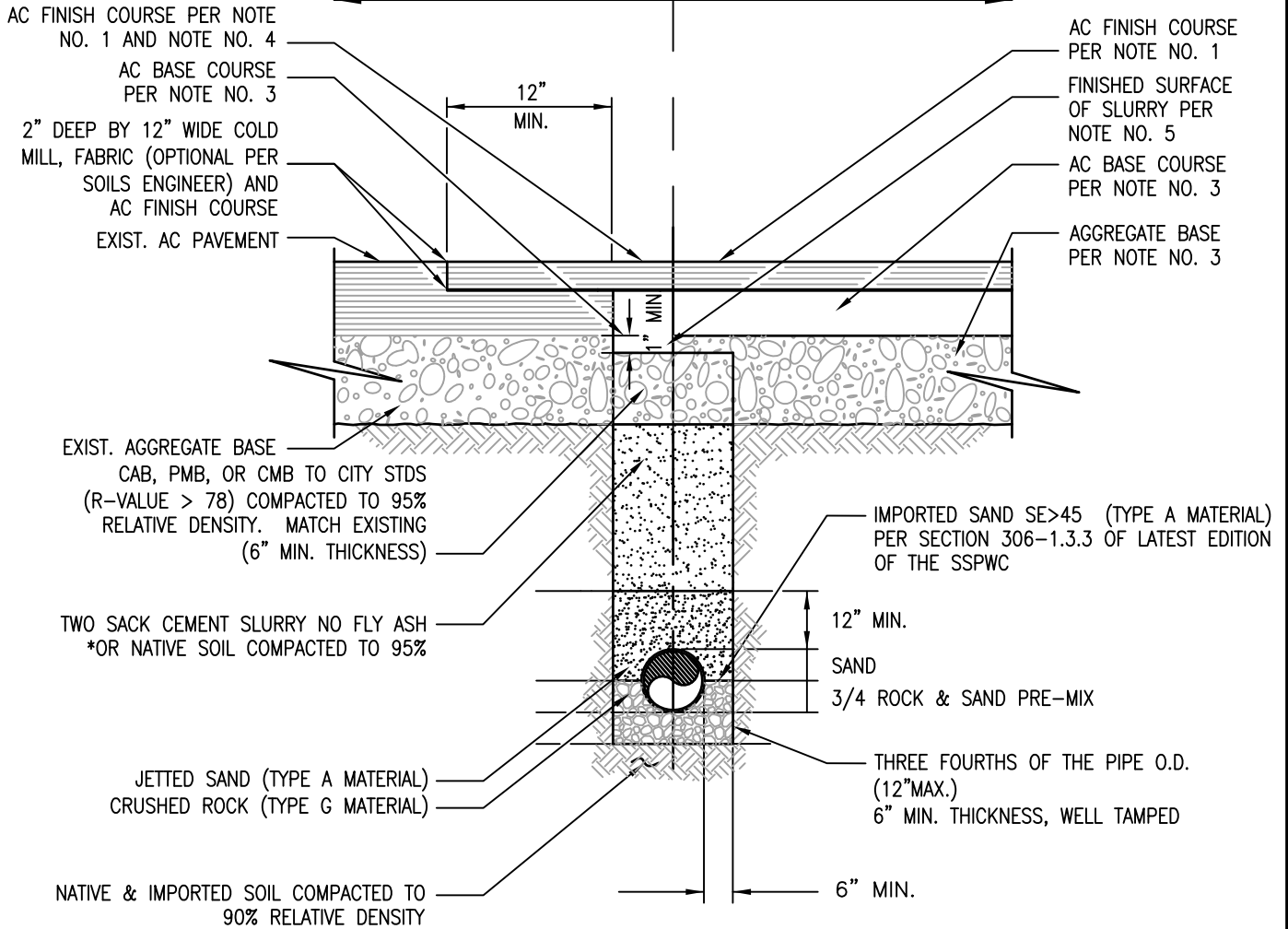


EXISTING STREET | PROPOSED STREET



NOT TO SCALE

SEE PAGE 2 FOR NOTES

REV 11/30/15

APPROVED: _____

/s/

DIRECTOR OF PUBLIC WORKS

June 21, 2016

DATE

**CITY OF
SIMI VALLEY**

DEPARTMENT OF PUBLIC WORKS

SEWER PIPE TRENCH BACKFILL
& PAVEMENT DETAIL

STANDARD PLAN NO.

SV 40-30

SHEET 1 OF 2

CONSTRUCTION NOTES:


PAVING:

1. FINAL A.C. FINISH COURSE (CAP) SHALL BE A MINIMUM OF 2 INCH THICK.
2. COMPACTION TESTING IS REQUIRED FOR ALL NATIVE/IMPORTED SOILS.
- *3. EXISTING A.C. BASE COURSE THICKNESS SHALL BE 1 INCH MORE THAN EXISTING THICKNESS.
4. ASPHALT CONCRETE (A.C.) BASE COURSE SHALL BE TYPE B-PG 70-10. ASPHALT CONCRETE FINISH COURSE SHALL BE TYPE C2-PG 64-10, OR ASPHALT RUBBER HOT MIX PG 64-16.
5. FINISHED SURFACE OF SLURRY TO BE 1 INCH BELOW EXISTING A.C. IF NATIVE SOIL, USE EXISTING PAVEMENT SECTION.

SEWER:

6. TYPE G MATERIAL CORRESPONDS TO SSPWC TABLE 200-1.2 A 3/4 INCH.
7. THIS STANDARD PLAN IS ONLY APPLICABLE FOR THE FOLLOWING CONDITIONS:
 - TRENCH WIDTHS UNDER 40 INCHES (SEE STANDARD PLAN SV 40-20),
 - PIPES UP TO AND INCLUDING 15 INCHES IN DIAMETER,
 - APPROVED PIPE MATERIALS,
 - DEPTHS OF COVER SHALL NOT EXCEED 30 FEET.
8. CONDITIONS OTHER THAN THE ABOVE MENTIONED REQUIRE SPECIAL APPROVAL.
9. STANDARD DEPTH OF COVER IS 7 FEET. COVER DEPTHS LESS THAN 7 FEET REQUIRE SPECIFIC DETAIL AND APPROVAL AS DETERMINED BY THE CITY.
10. SEE SECTIONS 3.6 AND 3.7 SEWER STANDARDS AND CITY OF SIMI VALLEY STANDARD PLAN SV 40-20 FOR PIPE TRENCH MATERIAL AND DETAILS.
11. HAND SHAPE BEDDING FOR PIPE CURVATURE.
12. BACKFILL AND COMPACTION SHALL BE IN ACCORDANCE WITH SECTION 306.1.3 OF LATEST EDITION OF THE SSPWC.

REV 11/30/15

APPROVED: _____ /s/ DIRECTOR OF PUBLIC WORKS June 21, 2016 DATE	 CITY OF SIMI VALLEY DEPARTMENT OF PUBLIC WORKS	SEWER PIPE TRENCH BACKFILL & PAVEMENT DETAIL	STANDARD PLAN NO. SV 40-30 SHEET 2 OF 2
---	---	---	---